

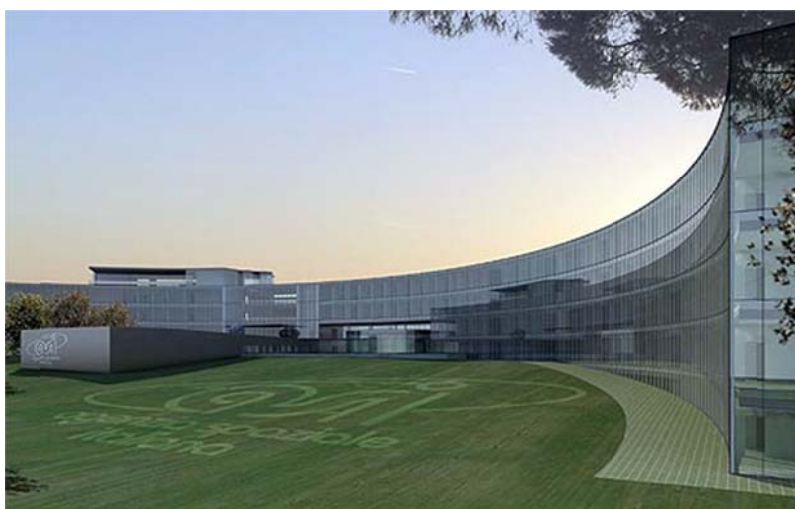


What

The present note reports the first draft planning and information related to the CCSDS Technical Subgroups meetings, from one side, and to the CCSDS Management Council (CMC), the CCSDS Engineering Steering Group (CESG), and the ISO Technical Committee 20 Subcommittee 13 (TC20/SC13) meetings, from the other side, all to be hosted by ASI for Fall 2016.

Where

All the meetings will be hosted at ASI Headquarters premises, located in Via del Politecnico in Rome.



ASI HQ main view

The establishment is quite new and the offices moved there from the previous building in the center of Rome to the new location just at the beginning of 2013.

When

A two months time-frame going from the second half of September up to the first half of November, has been considered as the reference period where the CCSDS two weeks window is supposed to be fixed.

At the present time there are no public events already scheduled within those two months that potentially might need to use the infrastructure that have been addressed to be devoted to the CCSDS works.

For this reason, CCSDS is kindly requested to feel free to independently take the decision about two weeks to be fixed on the calendar.

How to get it

ASI Headquarters is located in Via del Politecnico, South East of Rome, outside the main ring highway (GRA – Grande Raccordo Anulare), very close to the access to the highway to Naples.





The site on the map

The site is about 40 km far from the Leonardo da Vinci International Airport, from where it can be reached through car or taxi in about 30-40 min (depends on the traffic).

The connections from the center of Rome foresee the use of a combination of metro (Line A, up to the Anagnina station) and bus (Line 20).

The possibility to make available shuttle services going from the hotels, which will be reserved, up to the ASI site, is under negotiation with the hotels.

Logistics

ASI Headquarters is composed of different buildings devoted to different functions.



In the picture above, in particular, the two main buildings which will host the meetings are highlighted.

The Auditorium, able to host up to 374 persons, will be used for opening and closing plenary sessions of the CCSDS SG meetings work week.

The Building "I" will host all the meetings for both sessions.

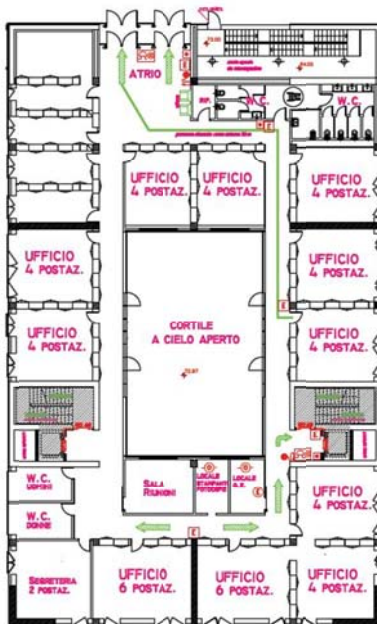


Building "I" outer front access

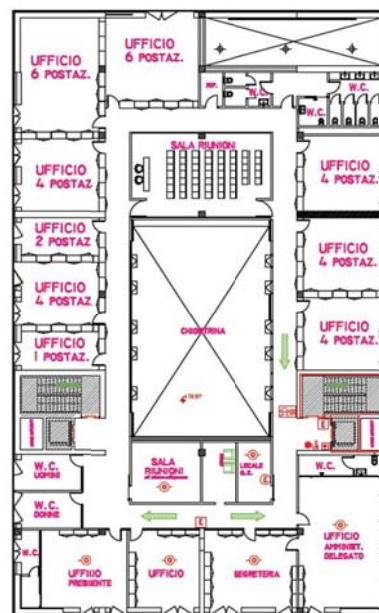


Building "I" front access hall

The building is spread out over two floors, each of which having availability for more than 10 rooms, all having the size required for CCSDS meetings needs.



First floor map



Second floor map



All the necessary furniture and technical facilities will be made available according to the “CCSDS Meeting Hosting guidelines” requirements.

Specific ones will be agreed on a case by case basis.

